

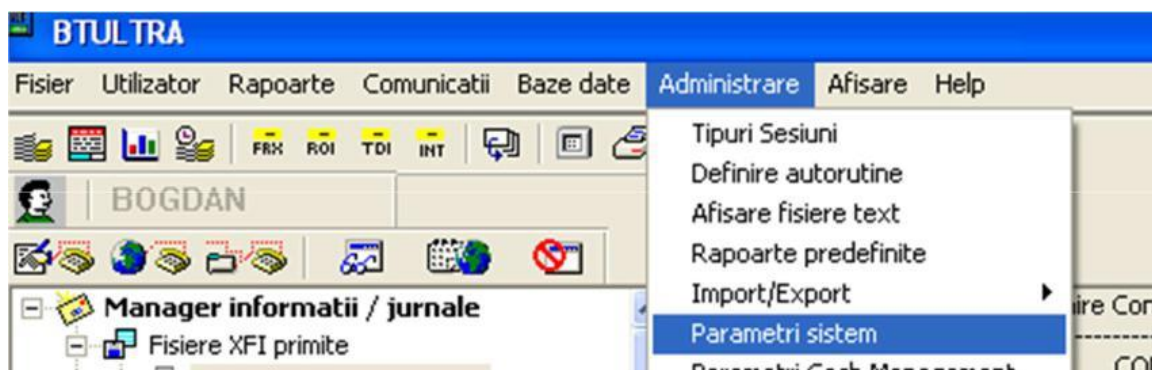
Dear Clients,

Please find below the steps that are to be followed in order to take over the **Online Balance** in the BT Ultra application:

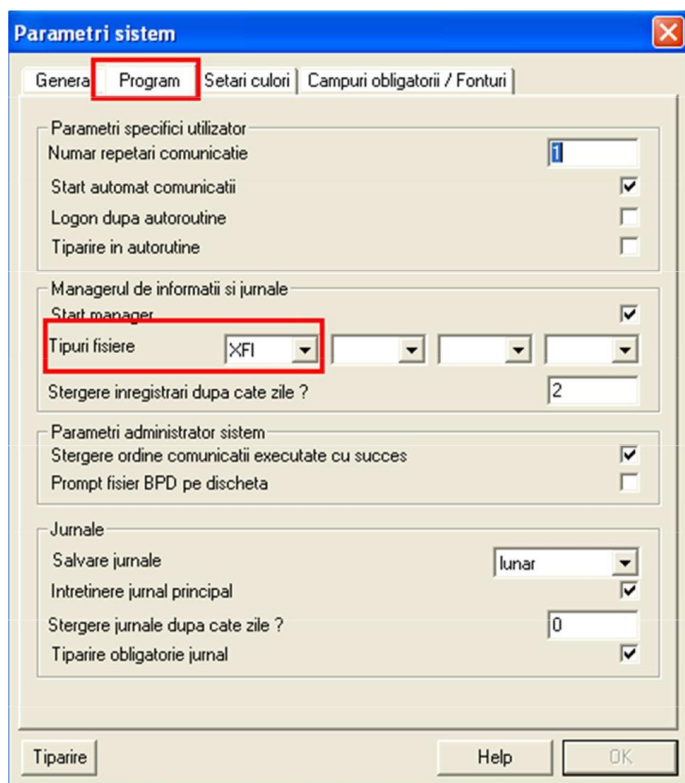
**Step 1:** Log in and establish a connection with the bank, either with **Collect data from banks** or with **'Favorite Communications'**, via the STA session

**Step 2:** Restart the BT Ultra program.

**Step 3:** When you relaunch the application, access the menu **Administration ---> System parameters.**

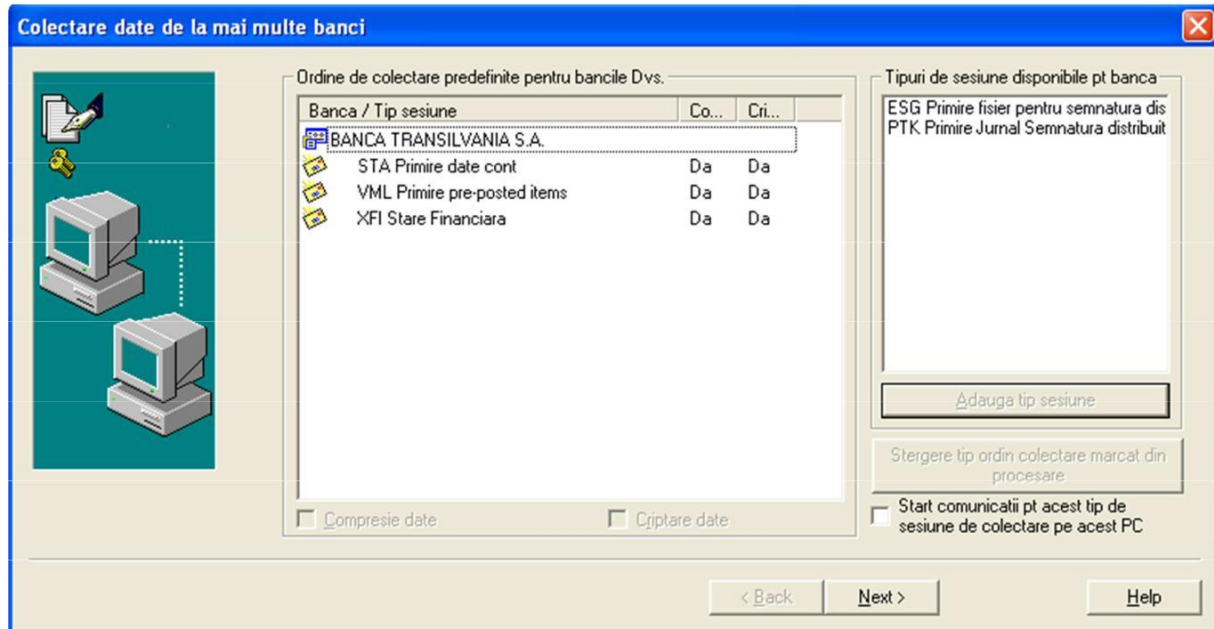
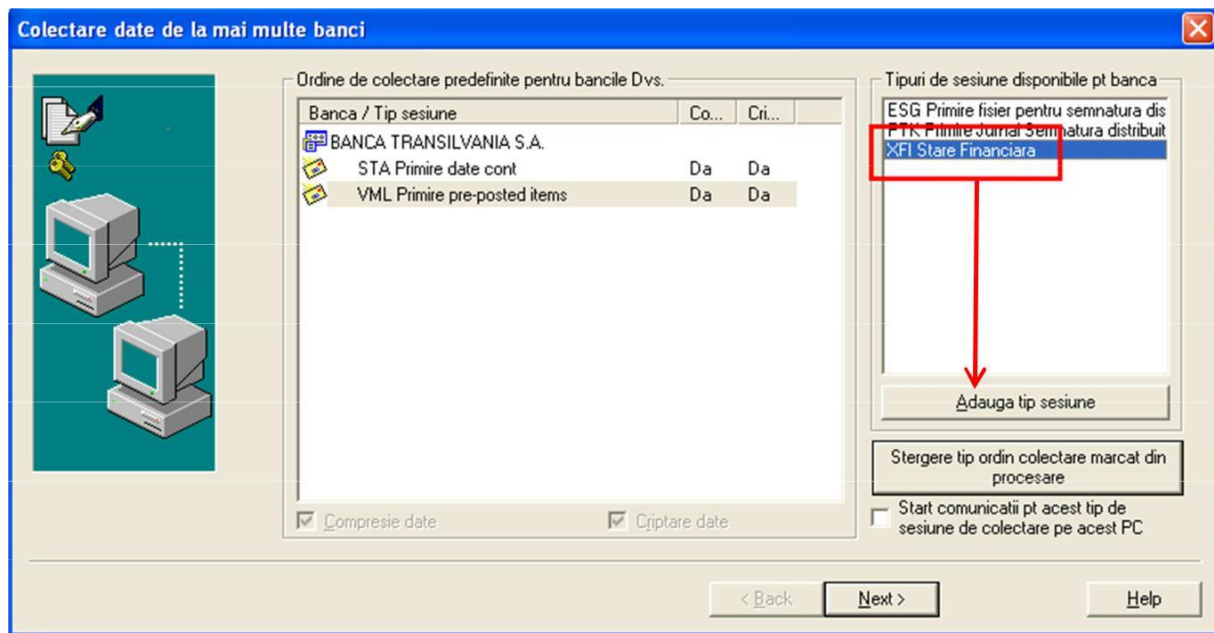


Click the **Program** tab and add the **XFI** session for **File types**:

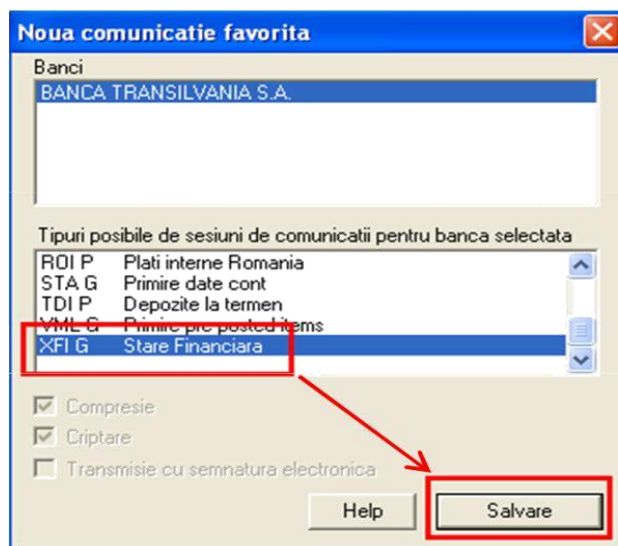
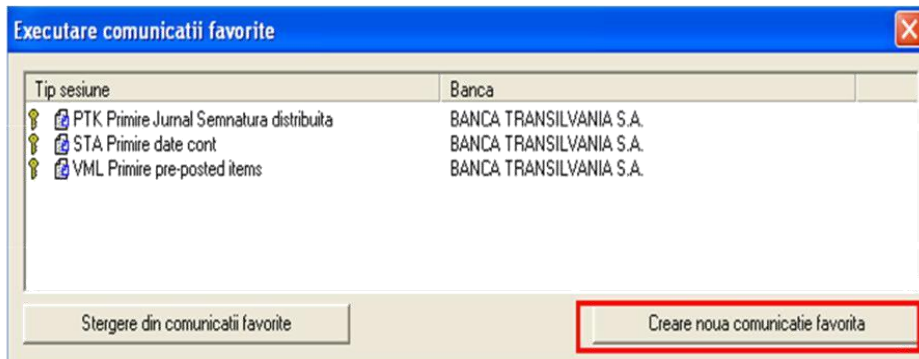


**Step 4:** The **balance** takeover from the bank may take place in one of the following ways:

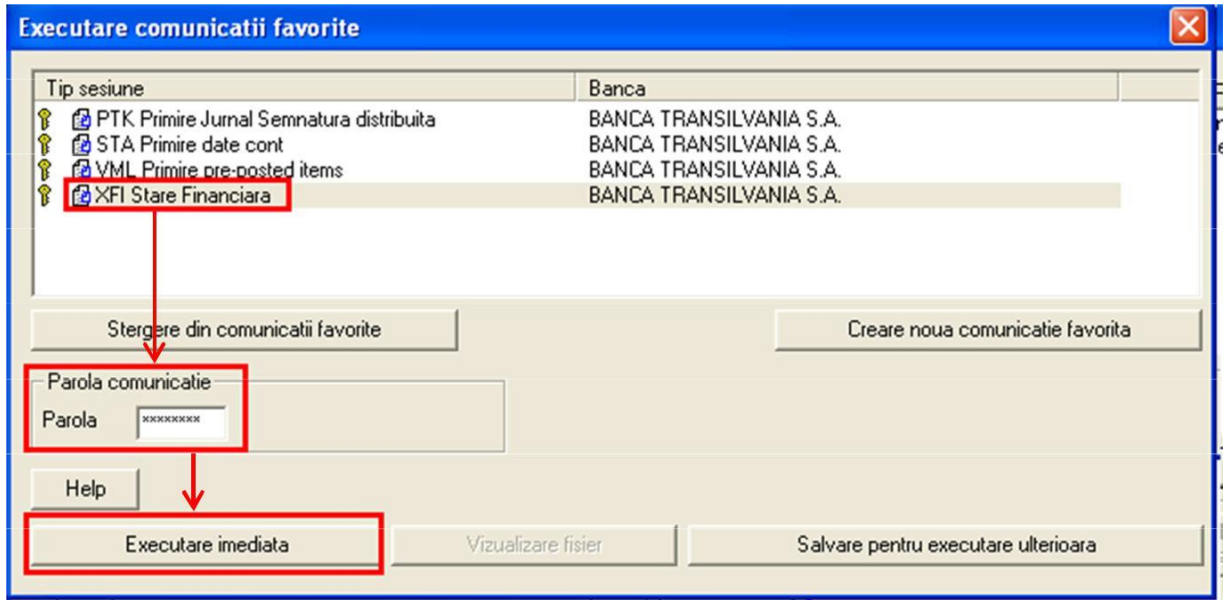
- **Collect data from banks:** access the **Communications** menu ---> **Collect data from banks**, select the session **XFI**, and then click **Add session type** ----> **Next** --> enter the communications password ----> **Finish**.



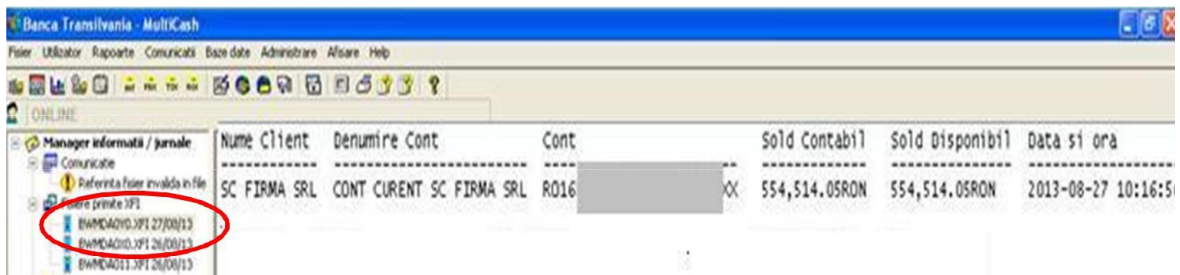
- **Favorite communications:** access the **Communications** menu ----> **Favorite communications**, click **Create new favorite communication**, select the **XFI G Financial Standing** session and then click **Save**.



Once the new session is saved, a favorite communication is created, selecting **XFI G Financial Standing** ---> enter the communication password ---> click the **Immediate execution:** button



**Step 5: View balance** in the Information Manager and Logs, by accessing the files named **BWMDA... XFI/ DD/MM/YY.**



For further information, please do not hesitate to contact the BT Ultra Team